

## Customer Appreciation Days planned for area towns

We hope to see you at our Customer Appreciation Days planned for the following dates and communities:

**August 11** - McCool Junction/Lushton 11:00a.m. -1:00p.m. at the McCool Town Hall.

**August 12** - Milligan/Strang 11:00a.m.-1:00p.m. at the Milligan Auditorium (in basement).

**August 13** - Gresham/Thayer 11:00a.m.-1:00p.m. at the Gresham Community Building.

If you are a Perennial customer and live in one of these towns or anywhere else in the service area, come join us for hot dogs, chips and a drink.



Cooking hotdogs at the 2009 Customer Appreciation Day at Grafton (L-R) Bill Downer, Shayde Linabery and Jim Winchell



2009 customer appreciation day at Waco



2009 customer appreciation day at Grafton

Stop in and pickup a free compact fluorescent light bulb at one of Perennial's customer appreciation days. One bulb per family.

### Compact fluorescent light bulbs

- Use 70-75% less energy than their common light bulb equivalents.
- Last 10 times longer than an incandescent bulb.
- Can save an average of \$30 or more in energy cost over their lifetime.
- Produce 75% less heat.
- Help the environment by saving energy.
- Are most cost-effective when used 2-3 hours per day with infrequent switching.

# Practicing hot-line work to keep the power flowing

by Mick Northrop

The term ‘hot-work’ has different meanings for different businesses. In the electric utility business hot-work means working on energized lines.

Hot-work has been practiced for a long time in the electric utility business and was first done at Perennial in the late 1970’s. The purpose of doing hot-work is so crews can make improvements to lines and poles without shutting off the power and interrupting customers’ daily lives.

The demand for electricity is growing and with that comes a greater need for uninterrupted service. Imagine how difficult it would be for factories if they had to shut down every time we needed to work on the lines. That’s why hot-work is a daily routine at Perennial whether it is a simple line repair, replacing a broken crossarm or the complex task of changing poles.

You can probably imagine that hot-work isn’t something that can be done without lots of training. Let’s face it, the guys are up there handling lines with 7,200 volts of electricity running through them. Hot-work takes a lot of skill, concentration and regular training to do it safely.

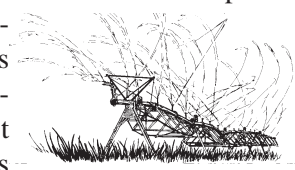
You might wonder how linemen can handle high voltage without getting shocked. First off, the boom on the bucket truck insulates them from the ground at a rate of 100,000 volts per foot of insulated boom. Next, the linemen wear rubber gloves and sleeves that are insulated up to 20,000 volts. Next, all lines within reaching distance must be covered with 20,000 volt rubber insulated hoses. Last, the poles and cross arms must be covered with 20,000 volt rubber blankets.

So next time you see a sign that reads “Utility Work Ahead” there is a good chance the crew is doing hot-work.



## Irrigation services to be billed in August, September and October

In case you missed it in earlier publications, irrigation customers will be receiving their first energy bills shortly after August 15th. These bills will be due September 5th. Energy will also be billed on September 15th and October 15th and those bills will be due on the 5th of the following months. Contact us if you have questions about your irrigation bill.



## Update on new meters

For several issues we have published updates on the progress of our new Advanced Metering Infrastructure or AMI. If you are reading about this for the first time here is a review:

On December 18th, 2007 the Perennial Board of Directors approved the purchase of an AMI system and since Spring of 2008, we have been implementing the new system.

There are three components that make up the system which are servers at the office, injection equipment at the substations, and the meter at your residence, business, or irrigation well. There were approximately 7500 meters that needed changed and 15 substations that need to be retrofitted. As of July 21st there were still about 200 meters that needed to be changed and all substation equipment had been installed.

There are many expected benefits this system will bring to our District. A few of these include no self-reads for customers, minimized outage restoration times, and a reduced number of estimated bills. We have already been utilizing these new meters in the villages, on seasonal accounts and on irrigation services. The last group to get the new meters will be the customers who normally read their own meters.

With only 200 meters left to install and test, we hope to have the entire system operating by late fall of this year.

If you are reading your meter now, please continue to do so until we notify you that we have taken over reading all meters. If you have questions or you want to know more about the new meters, please feel free to contact our customer services department.



New residential AMI meter

## Washington Youth Tour 2010



**Ali Petersen (front row 3rd from right) representing Nebraska and Perennial Power**

In 1957 Lyndon Baines Johnson inspired the Youth Tour when he addressed the National Rural Electric Cooperative Association (NRECA) Annual Meeting in Chicago. The Senator and future president declared, "If one thing goes out of this meeting, it will be sending the youngsters to the national capital where they can actually see what the flag stands for and represents."

Today nearly 1,500 students and chaperones attend the week-long Youth Tour in Washington, D.C. every June, where they visit Capitol Hill, sit down and meet with their U.S. Representatives and Senators, tour the sites of D.C. and experience the history of our nation's capital.

Through motivating guest speakers, students learn what it is like to get involved, stand up for what they believe in and to keep fighting even when it is against all odds. This year for example, one of the speakers was former Nebraska State Senator, David Landis who portrayed the late Senator George Norris. Senator Norris who led the charge to the enactment of the Rural Electrification Administration (REA) and the Tennessee Valley Authority (TVA).

Kristen Gottchalk and James Dukesherer of the Nebraska Rural Electric Association (NREA) are the statewide coordinators for this event. To give you a sense of what the week was like here are a few of the highlights:

**Saturday June 12th** - Tour Gettysburg, tour of memorials

**Sunday June 13th** - Tour Washington National Cathedral, historic Georgetown, Holocaust Museum, tour memorials

**Monday June 14th** - Youth Day Program, tour of National Mall, National Archives, Union Station, White House walk-around

**Tuesday June 15th** - Mount Vernon, Christ Church, Arlington

ton National Cemetery, U.S. Marine Corps Memorial  
**Wednesday June 16th** - Tour Capitol Hill, Meetings with Senators Nelson and Johanns and Congressmen Smith and Fortenberry, tour of U.S. Capitol, Library of Congress, Supreme Court.

This is a great opportunity for any student that is interested in the history of our country and how our branches of government operate.

Ali Peterson of McCool Junction was one of the Nebraska representatives in Washington, D.C. after being awarded the trip last summer. The Perennial Board of Directors voted to award the trip to Petersen because she was one of the finalists in the Ambassador Competition at the 2009 NREA Youth Energy Camp last July at Halsey National Forest. Petersen was representing Perennial at that camp. She is the daughter of John and Pam Petersen of McCool Junction, NE.

## 2010 Youth Energy Camp

The 2010 Youth Energy Camp at Halsey took place during the week of July 19-23. Students sponsored by Perennial were Blake Papik of Exeter and Alex Hinz of Bradshaw.



The guys enjoyed a full week of fun and challenging activities several of which gave them the opportunity to practice their leadership skills. They learned what it was like to operate a public power district as a general manager or a member of a board of directors. In between workshops, demonstrations and career oriented presentations, they worked in small groups on projects such as planning the group picnic, working on a newsletter and decorating for the banquet on Thursday night to name a few. There was even a talent show.

Perhaps the highlight of the week was the bus trip to Kingsley Hydro Plant at Lake McConaughy and a tour of

Gerald Gentleman Station near Sutherland to see Nebraska's largest coal-powered generating plant.

The week was capped off with a formal banquet and dance on Thursday night.

(L-R) Blake Papik, Alex Hinz and students from Polk and Butler counties ready to head off to camp

After a good night's rest and one last amazing meal, everyone said their farewells and headed home. Another great youth energy camp is in the history books.



## Community Calendar

Geneva Farmer's Market (Every Tuesday)

Henderson Farmer's Market (Every Tuesday)

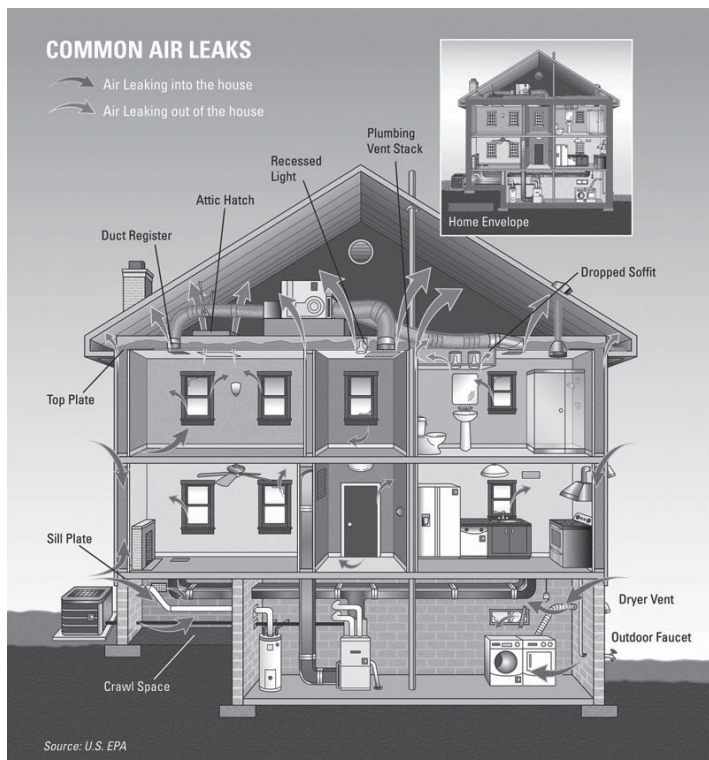
York Farmer's Market (Every Thursday)

**August 11** - Perennial Customer Appreciation Day - McCool Junction Town Hall 11:00 am - 1:00 pm

**August 12** - Perennial Customer Appreciation Day - Milligan Auditorium Basement 11:00 am - 1:00 pm

**August 13** - Perennial Customer Appreciation Day - Gresham Community Building 11:00 am - 1:00 pm

**August 13-15** - Benedict Days Aug 14th is Alumni Banquet



### Sealing air leaks and adding insulation

Many air leaks and drafts are easy to find because they are easy to feel — like those around windows and doors. But holes hidden in attics, basements, and crawlspaces are usually bigger problems. Sealing these leaks with caulk, spray foam, or weather stripping will have a great impact on improving your comfort and reducing utility bills. (See the above diagram to find out where the most common air leaks are in homes).

#### Adding Insulation

Insulation keeps your home warm in the winter and cool in the summer. There are several common types of insulation — fiberglass (in both batt and blown forms), cellulose, rigid foam board, and spray foam. Reflective insulation (or radiant barrier) is another insulating product which can help save energy in hot, sunny climates.

When correctly installed with air sealing, each type of insu-

lation can deliver comfort and lower energy bills during the hottest and coldest times of the year.

Insulation performance is measured by R-value — its ability to resist heat flow. Higher R-values mean more insulating power. Insulation works best when air is not moving through or around it, so it is very important to seal air leaks before installing insulation to ensure that you get the best performance from the insulation.

#### Rebates for attic insulation

Perennial offers rebates on attic insulation for customers who use electricity as their primary heating source. If you currently have 6 inches of insulation or less in your attic and you plan to add 6 inches or more, you may qualify for up to a \$300 rebate depending on the square footage of your attic. New construction and/or additions do not qualify.

#### Federal tax credit for adding insulation

In 2010 a tax credit is still available for adding insulation. The credit is 30% of the insulation cost up to \$1,500. Weather-stripping, spray foam in a can, caulk and house wrap also qualify with manufacturers certification statement.

### Landlord and tenant both responsible for electric service changes

We want to again emphasize that both landlord and tenant need to contact Perennial if they are planning to connect or disconnect any services. This will assist Perennial in identifying who will be responsible for electric service both while the tenant is living there and after they move. For instance, if the landlord wants the service automatically transferred back into their name after a tenant moves without interruption, we will need to know that and this needs to be communicated to Perennial every time a tenant moves in and out.

#### Avoid reconnect charges

The normal process that Perennial will follow for apartment and house rental, is when a tenant calls to have service cancelled, the service will be disconnected unless the landlord has called us and agreed to have the service transferred back to them. If we don't hear from the landlord, the landlord will be responsible for a reconnect fee if they want the service restored.

#### Service agreement

All tenants are required to sign an application and pay a deposit or provide a letter of credit in lieu of a deposit prior to having electric service connected.

If you have questions about starting or stopping electric service, feel free to contact us at (402) 362-3355 or (800) 289-0288. You can also find applications for residential service on our website at [www.perennialpower.com](http://www.perennialpower.com) under the billing & customer services tab.